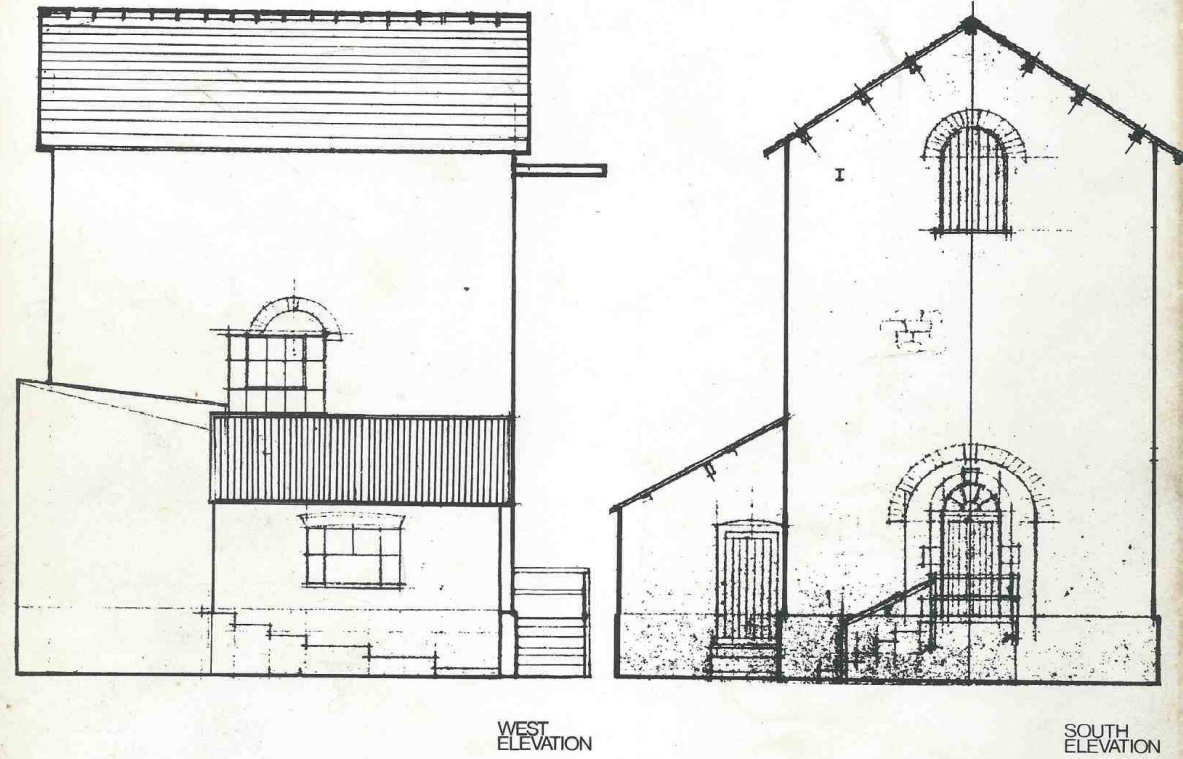


The Kilmersdon Colliery beam-engine house was typical of pithead buildings in the North Somerset coalfield. Built of white-lias limestone with a slated roof, it was 100 years old when demolished in 1975 some two years after coal production ceased at Kilmersdon. Little evidence remained of the Cornish beam engine which had been broken up in 1929. The cast-iron supports for the beam bearings could be seen projecting through the bob-wall at the back which was about 4 ft thick at that level. Traces of a circular base in the floor probably indicated the cylinder foundations and intervening measurements suggested that the length of beam would have been about 30 ft. The headframes behind the engine house, shown on the front cover, were over the winding and pumping shafts which reached a depth of 1,528 ft.



BIAS
JOURNAL
VOLUME 9 1976

BIAS JOURNAL No 9 1976

The cover shows Kilmersdon Colliery headframes and the old beam-engine house prior to demolition in 1975. A BIAS Survey team had measured part of the site after the colliery had ceased working in August 1973. The finished drawings of the engine-house were prepared by Colin Frayling who also provided the transparency for the high-contrast picture on the front cover.